



2013-2014 Calendar

August 19 - Classes Begin
 September 2 - Closed for Labor Day
 October 31 - Closed for Halloween and Harvest Festivals
 November 1-3 - Greater Gulf Coast Arts Festival
 November 16-22 - Costume Week (Parents Must Attend)
 November 23 - Costume Payments Due
 November 25-30 - Closed for Thanksgiving Holiday
 December 23-January 4 - Closed for Christmas Holidays
 January 31 - Late Costume Payments Due
 March 10-15 - Costume Fitting Week (Parents Must Attend)
 March 17-22 - Closed for Spring Break
 April 7-12 - Picture Week (Parents Must Attend)
 April 19 - Final Day to Turn in Program Ads
 May 26 - Closed for Memorial Day
 May 30 - In-studio Rehearsal for "The Beauty Within"
 (all recreational classes and solos only)
 May 31 - In-studio Rehearsal for Frankenstein
 June 2 - In-Studio Rehearsal for Frankenstein
 June 3 - In-Studio Rehearsal for Frankenstein
 June 4 - Tech Rehearsal for Showcase at UWF
 June 5 - Dress Rehearsal for Showcase at UWF
 June 6 - In-Studio Rehearsal for Showcase (LPAC only)
 June 8 - Showcase Performances at UWF
 June 9-11 - Production Tech Week at UWF Theatre
 June 12-14 - Production Performance at UWF Theatre

March Newsletter



SATURDAY, MAY 3RD.
DOORS OPEN AT 4PM. EVENT AT 5PM

@ LaBelle Performing Arts * 8253 Chellie Rd. Pensacola, FL 32526
www.labelleperformingarts.com

CASH PRIZES
 plus Merchandise and Scholarship prizes

\$300 BBOY
\$150 ALL STYLE

\$10 ages 10 and up * \$5 ages 6-9 year old * 5 & under is free.



MICHAEL WARDLAW



Wedding Videos \$500.00 and Up
Photo Shoot \$200.00 (Includes Disc)

SWIFT VIDEO PRODUCTIONS
WWW.SWIFTVIDEOPHOTO.SMUGMUG.COM

Recital Information

Program ads are due April 19th.

Please turn in ticket requests by May 10th to guarantee your tickets will be available.

If you are interested in purchasing a t-shirt or souvenir program for the shows, payment is due May 10th.

Shirts are \$20 each or \$35 for one shirt from each show, and programs are \$10. These prices are only valid for pre-orders.

We are very excited to announce that this year's recital videos will be recorded in high definition and delivered on Blu-ray disc. Your blue ray disc order will be due June 14th.



www.thewomensgroup.org
(850) 476-3696

Picture Week Information

Picture week is April 7-12

Your photo package will include:

- All your individual and group photos on a USB.
- Editing (if needed) for one individual photo will include brightness, contrast, sharpness, and backdrop removal.
- Photo Copyright Release document, so that you may print your photos at the location of your choice.

Prices

- Package #1 - \$30.00 (1 class or dance)
- Package #2 - \$50.00 (2-3 classes or dances)
- Package #3 - \$75.00 (4-7 classes or dances)
- Package #4 - \$100 (8 or more classes or dances)

We will strive to capture the best images of your child, but please bear in mind that due to the number of students we will be photographing we will be going quickly through each shot. Each costume will be allowed 3 poses and each pose will be limited to 5 shots. Please choose appropriate poses for your child's level. Pose books will be available in the lobby for ideas. Please have your poses ready by the time you enter the photography area. These will be basic pictures similar to school pictures.

Don't forget to pack!

Your costumes and costume parts, appropriate shoes, tights, any props you may need, hair spray, hair nets, bobby pins, makeup.

The law firm of CLARK PARTINGTON HART
LARRY BOND & STACKHOUSE

PROUDLY SUPPORTS

La Belle Performing Arts

www.cphlaw.com

Wahoo's game tickets \$9 each

PENSACOLA
BLUE WAHOOS

Our boys Lil' PAC crew will perform at the Wahoos Game on April 6th. Please come out for the fun and to support our boys!!

WWW.PENAIR.ORG

experience
it.

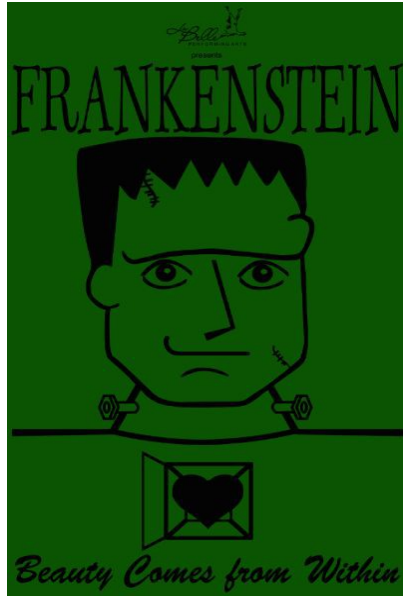
Experience Pen Air FCU for all
of your financial needs!

PEN AIR
FEDERAL CREDIT UNION
we get it done!
850-505-3200

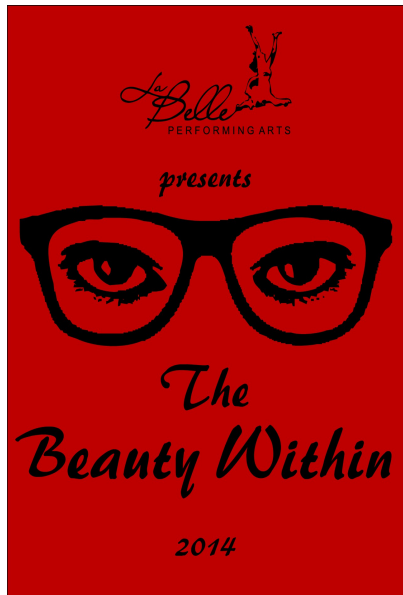
© 2012 Pen Air Federal Credit Union. Federally insured by NCUA. Equal Housing Lender. Ask about membership.

SPREAD THE WORD!!

This year's end-of-year productions are:



June 12th-14th



June 8th



LaBelle Performing Arts supports the fight for cancer!

Come join our team!

When: Friday May 9th at 6:00 pm

Where: Washington High School

Three easy steps to register:

1. Go to relayforlife.org
2. Scroll down to find a team and type in LaBelle Performing Arts
3. Click on join our team

The cost to register is \$10.

In-studio Rehearsal and Tech Week Schedule Changes

Due to circumstances beyond our control, we will need to make some changes to the dates for in-studio rehearsals for *Frankenstein* and *The Beauty Within* and rehearsals at UWF for *The Beauty Within*. We will provide everyone with updated schedules once we finalize the changes so that you may make appropriate arrangements. We apologize for any inconvenience.



Attendance Policy

Students are strongly encouraged to attend class every week in order to develop their skills through practice and repetition, as well as build the necessary conditioning for their bodies. A student in group classes planning to participate in the end-of-the-year showcase will not be allowed more than 4 absences after February 1st. Excessive absences make it difficult for a class to learn the necessary choreography or blocking and lines (Theatre) for the end-of-the-year showcase. A student may choose to make-up absences by taking private lessons with their instructor in order to review material covered in class.