

LaBelle Performing Arts



October Newsletter



2012-2013 Calendar

October 31 Studio Closed for Harvest Festivals
November 2-4 Greater Gulf Coast Arts Festival
November 10-16 Costume Week (Parents Must Attend)
November 17 Costume Payments Due
November 19-24 Closed for Thanksgiving Holiday
December 23-January 5 Closed for Christmas Holidays
January 11-12 Mid-year Ballet Production
January 31 Late Costume Payments Due
March 16-22 Costume Fitting Week (Parents Must Attend)
March 25-30 Closed for Spring Break
April 15-20 Picture Week (Parents Must Attend)
April 20 Final Day to Turn in Program Ads
May 27 Closed for Memorial Day
May 31 (Tentative) In-studio Rehearsal for Showcase
June 1 (Tentative) In-studio Rehearsal for Production
June 7 (Tentative) Showcase Tech Day at UWF
June 8 (Tentative) Showcase Dress Rehearsal at UWF Theatre
June 9 (Tentative) Showcase Performances at 12 noon and 4 pm
June 10-12 (Tentative) Production Tech Week at UWF Theatre
June 13-15 (Tentative) Production Performances at UWF Theatre

Special Announcements

**We are now selling dancewear!!
All profits go to support this year's mid-year
ballet production "Around the World in 80 Days"**

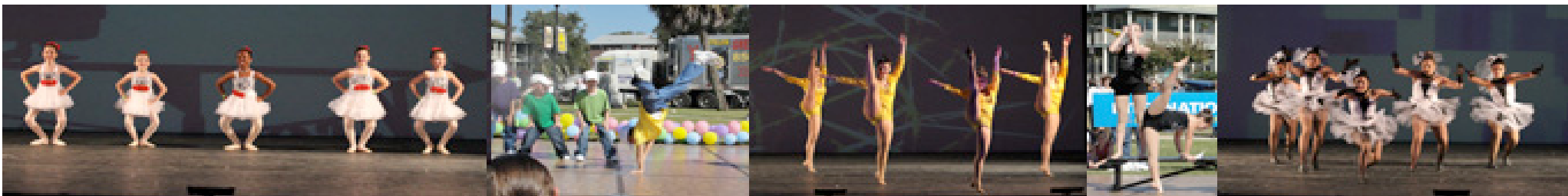
Ballet Shoes \$
16.00-\$18.00

Leotards \$16.00-\$25.00

Tights \$16.00

*Many styles to choose from!
Orders placed every two weeks!*

Please see the front desk if you are interested in a fitting or would like to make a purchase.



MICHAEL WARDLAW



Wedding Videos \$500.00 and Up
Photo Shoot \$200.00 (Includes Disc)

SWIFT VIDEO PRODUCTIONS

WWW.SWIFTVIDEOPHOTO.SMUGMUG.COM

Sponsorship Opportunity

The ads seen appearing on the sides of this newsletter are local businesses that support our school. Please take a moment to visit their websites which you can access through our website. We want to thank these businesses for their assistance and take advantage of the services they offer. If you are interested in placing an ad with us, you may do so for \$200 which includes a 30 second commercial created for your business, a business card size ad in our newsletter and all other programs printed throughout the year (usually 5) as well as acknowledgements before each show.

For more information contact
Michael@labelleperformingarts.com

THANK YOU!!!

Women's Group Sponsorship

A very special thank you to the Women's Group of Pensacola for their generous donation and sponsorship of our mid-year ballet performance, "Around the World in 80 Days." This donation brings us to about half our fundraising goal! It is with this kind of support, we are able to offer special opportunities not found at other schools in the Pensacola area.

Fundraisers

Crazy Costume Week

October 24th-30th, for \$1.00 you can wear a crazy costume to class. Please make sure it is not scary and it should be something you can move in. Students must have proper shoes for classes.

LPA Costume Dance Party

October 27 6:00-8:00 pm. Join us for food, music, games and fun fun fun!!! Cost is \$5.00 per person. Please no scary costumes.

Craft Fair

We will hold a harvest craft fair sometime in November. If you are interested in setting up a table, please let the front desk know. All proceeds will be put towards our mid-year ballet production, "Around the World in 80 Days."

Photography Class: Saturday's photography class was a great success, and I've been asked to hold another one. Please let me know if you are interested so that I can make a schedule. This is a single class covering the basics of shooting in Manual mode on your DSLR camera. We will discuss action photography as well as portraits and lighting techniques. All moneys raised will help pay for our mid-year ballet production, Around the World In 80 Days.

Greater Gulf Arts Festival

We will be dancing on the Performing Arts stage November 3rd at 1:30pm and November 4th at 12:15pm.

Please join us for fun in the sun and a weekend of the arts!

The Floor Store
Tile • Carpet • Hardwood • Stone
439-1600

Andrea Tara
shopthefloorstore.com

1113 N. 9th Avenue
Pensacola FL 32501

ADD SPACE AVAILABLE

\$200.00

Includes 30 second commercial, newsletter, all programs, website link, and acknowledgements before shows. All proceeds support programs at LaBelle Performing Arts

Shehee & Callahan
Family
ORTHODONTICS
"Serving You With A Smile"

Costume Deposits

We would like to encourage those participating in the end of the year productions to start making deposits towards your costume fees in advance of the due date. This will help in spreading the payment out. Costume payments will be due in full by November 17th. Your costumes cannot be ordered unless they are paid for, so please be sure we receive all payments on time. Also, tuition payments must be up to date for your costume to be ordered.

Home School Program

Friday mornings. Cost is \$30 for the first class/child and \$15 each additional class or child per month. Classes are every Friday. Intro to Dance-ages 4-7 from 9:30-10:30 and Intro to Dance ages 8-up 10:30-11:30. (Intro to Boys Hip Hop ages 8-up from 9:30-10:30 and Intro to Boys Hip Hop ages 6-8 10:30-11:30. Classes run from August-May. Registration fee is \$35.



www.thewomensgroup.org
(850) 476-3696

Ashley's Art Spotlight



Our art students have been studying Georgia O'keefe's use of color. Here are some examples of their work!!



LPA Fit

Mornings:

Monday and Friday 9:30-10:30 am
Wednesday 10:30-11:30 am

Evenings:

Wednesday 5:30-6:30 pm
Friday 4:30-5:30 pm

Cost: \$10 per class

What to bring:

- Water
- Workout Clothes
- Running Shoes
- Towel
- Fitness Journal
- Work-out gloves

Come Join US!

Music Program at LaBelle

Our music department is better than ever this year! We are currently enrolling students for private lessons in Clarinet, Cello, Drums, Flute, Guitar, Oboe, Piano, Saxophone, Trumpet, Ukulele, Violin, Viola, and Voice. Group classes include Musical Theatre and Glee.

